

# Global Awakening News

*Commentary and Guidance for Enlightened Change During Rapidly Changing Times*


~ Special article reprint ~

August-September 2007

## “A New Earth”

By Alex Kochkin

*These essays are presented for their value to anyone who cares about the future as humanity prepares to make the greatest shift in consciousness and existence ever. We cover a wide range of topics including social-values research, “future-views”, the world situation, and advanced spiritual perspectives.*



*“GLOBAL AWAKENING means individuals and communities becoming aware of and embracing their true nature – one of interconnectedness, service, and spirituality, as we express extraordinary dimensions of our larger being. “*

# A New Earth

by Alex Kochkin

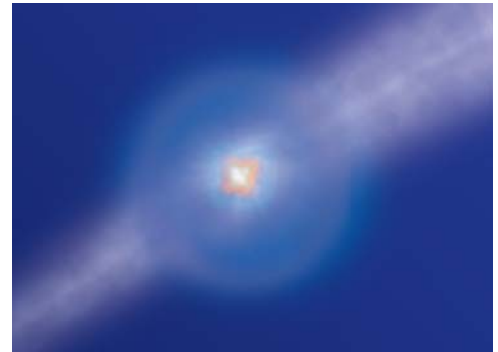
It is now possible to say that there is a special relationship between Creation I and Earth I and another sort of special relationship between Creation II and Earth II. The very vibrational and proximate presence of “New Earth” amidst the greater backdrop of “New Creation” is having a strong influence on residents of 3-d Earth, this is roughly akin to magnetic induction.

There are at this moment a number of potentialities that could unfold –and the extent to which those who are more aware can mobilize greater spiritual energy, then the more active a role we can play in steering the outcome. To spell possible scenarios out would be too speculative and counter-productive. Suffice to say it is still a matter of approach and timing –how to bring the New Creation/New Earth “online” while optimizing the awakening of the greatest number of people. This is now on the agenda in our timeline, here and now for both Earth’s.

## Background

From mid-1995 to 2005 we were focused on creating new bodies of work that could affect a positive outcome for global awakening and to examine the social-spiritual state of humanity while keeping sight of the “big picture” of the earth-cosmos operating theater. I had spent most of my life developing a good understanding of the planet, humanity, and social and spiritual concerns. More than observe, I was a direct participant in all this as best as circumstances permitted.

Time was clearly running out and the questions were simple but the process for us difficult: To what extent was it possible for humanity to help itself out of what was an obviously growing morass –or worse yet, abyss of no return and to move ahead (without massive external help) in its spiritual evolutionary path. A closely allied question concerned whether it was possible for this “version” of humanity to move ahead to the new evolution, new earth, and a new being --and If so, then how?



This article continues from some earlier writings concerning a “new Earth” and “heaven on Earth”. The perspective is one that is to be free of the illusion of improving humanity’s way of life within the paradigm and limits of the existing control matrix --and focuses instead on the creation of new life, new consciousness, new patterns for life, and in a larger context of connection to higher self and reconnection to Source consciousness.

Regardless of how the humanity-Earth relationships plays out, there should be no question as to the importance of encouraging people now to function in a spiritually awakened manner in the context of their everyday lives and in so doing to encourage people to become oriented to the concept of new Earth and new consciousness. It also affords ways for many to connect with the *consciousness* of the new world, energetically and literally. And so this can only be a good thing.

Given what we are seeing now, humanity is now facing the juncture of the break down of the old reality and illusions and the emergence of something new and wonderful.

## Old Earth/New Earth, Earth-I/Earth-II

Over the recent decade, people who are sensitive and imaginative to spiritual energy, have referred to the possibility of a “new” Earth. Many people who are aware of “new Earth” or “Earth-II” tend to speak of it as if it has been here all along and suggest that somehow we will all be living in a world that is somehow transformed version of our old world – at times suggestive of a benign version of consumerism and capitalism. Others speak of it as if it is the old world but somehow everyone is more spiritual and ethical and connected to higher self. Few have addressed the transition from the old earth and human social control matrix to the new earth and to other unknown destinations. To hear some versions, it sounds like somehow we will all still be pretty much as we are, but happier, somehow. To some people trying to describe new earth, it often sounds as though one will be still living the old earth life, but somehow it will be better, easier, etc. Of course the practical feasibility of having both existences presents some problems.

It is our current point of view that are in effect two Earths, one of a higher vibration and mostly invisible from the Earth-I perspective. What we could call present Earth or Earth-I hosts a large human population that for the moment is experiencing varying degrees of chaos and trauma.

Indeed, there are those who are presenting accessing new Earth and indeed, new Earth is having a positive and catalytic vibrational influence on the 3-d reality Earth that we are most familiar with. At some point in the process and in the near future, a situation is likely to emerge that could be likened to two colonies of humans populating two separate worlds. Those on Earth-I will be focused one type of conscious evolutionary path that involves the healing and correcting much of the damage that has done to the planet and in so doing, will learn new ways to access higher consciousness and that of the consciousness of the planet and matter. Those colonizing Earth-II will focused on a different evolutionary path, one that is more in tune with the new Creation/Creation-II that will have its own set of challenges.

Most of the earlier perspectives concerning “new earth” fail to reconcile the problems of the control matrix, war, environmental toxins, the obvious impossibility of maintaining society’s physical and political infrastructure, food, energy, etc. Neither do they address the profound problems associated with the degeneration of portions of humanity to a point where there are tens of millions of dangerous people who have no moral or ethical guidance to their actions and billions who have no inkling as to an alternative way of living together on this planet and can imagine no alterative to the decrepit control matrix.

So how is this problem to be resolved? Most likely there will be a combination of spiritual awakening as well as a rapid decline in population due to a combination of factors. Those who form enlightened communities will eventually set about the task of clearing and caring for Earth-I in a way that hasn’t been done before. John commented on seeing a whole new focus of collective work in the future: the dismantling of the cities and the toxic wastes. With some limited technical aid from off-world friends, this results in the cleaning of the physical environment from the toxins of centuries of human waste. I would add that as a spiritual practice, such work would lead to enhanced abilities that rely on the energy of consciousness

to modify physical reality. Thus there would be less reliance on physical labor in the ordinary sense and new evolutionary possibilities would naturally emerge for people.

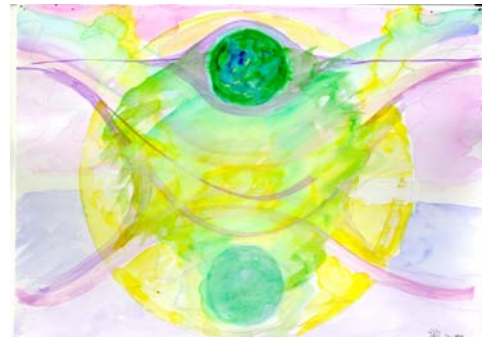
The physical, emotional, and spiritual suffering of the present-day humanity is more than any being should have to bear. And so it is difficult to imagine a new world emerging from the wreckage of the old without a concurrent transformation of consciousness and the emergence of extra-normal abilities.

Most importantly, there is absolutely no basis to expect that there are *any* institutions or other creations of the old paradigm and control matrix capable of reform --and certainly there is *no* reason to expect that anything created by the control matrix and the old paradigm thinking could create a new way of life for people. Anyone who makes such claims is doing a disservice and misleading people right back into the control matrix, even if their intentions are simply naïve.

Global awakening requires and implies a break with the old patterns of separation and a deliberate welcoming in of new ones that are connected to a greater Creation.

Over time, a new earth has been forming and gradually approaching from another dimensional reality while the overall energies of the “old Earth” are getting cleared and upgraded. The energy fields of old earth and new earth recently found connection, and are now practically coincidental with one another in time and space. However, they remain vibrationally differentiated and so the new Earth is not readily apparent to the majority of humanity and access to the new Earth remains somewhat limited. Nevertheless, the very presence of new Earth is having a catalytic effect on what we would call old Earth as well as humanity as a whole.

In looking ahead, it appears that the new Earth will vibrationally or dimensionally separate from its present “docked” position and begin the process of becoming a true “spaceship Earth“ with a “new Humanity “ as its co-pilot, companion, and co-creative partner. Eventually a new stage in development will be reached when together, they will no longer be dependent on orbiting within a solar system. This then will then mark new stage in a vast process that once began its focus on the human form. A new collective planetary being that is made up of sentient matter and biology and energy and individual beings may emerge to eventually begin a grand journey together as “one of many“ and thus a remarkable new achievement of Creation would occur. (The reader may do well to read “Starseed: Into the Third Millennium” by Ken Carey for an eloquent description of some of the possibilities.)



## An Assessment

Left on to its own devices, and due to many internal and external factors, humanity has been incapable of lifting itself from the brink of catastrophe. Over centuries and increasingly over recent decades, there has been a terrible loss of functioning free-will-power and mental discrimination, an increasingly toxic living environment, excessive pre-occupation with individual self, and the entrenchment of powerful forces who effectively rule the planet through a primarily covert matrix controlling all facets of life and consciousness. Even when

presented with the possibilities of catastrophe, humanity as a whole passively defaults to a type of mass denial and resignation without hope. Even when presented with terrible contrasts of the worst of human behavior towards itself and Earth, humanity seems to be immobilized by fear and unconsciously overwhelmed by its predicament.

Extenuating circumstances, primarily due to the inappropriate manipulations by powerful earthly and extra-dimensional dark forces, have caused an outside rescue effort to be launched. The “forces of rescue” who have been arriving, were not prepared for the profound level of damage that has been caused at nearly all energetic and material levels, nor had these forces expected humanity to be in such a compromised state of being. The new support is now coming from beings that could be very loosely described as “New Creator Gods from Source”. Their recent assistance has been effecting profound changes to our physical reality and providing a basis for a dramatic shift of consciousness.

There are now anticipated significant upheavals throughout human society due to a confluence of major changes to the planetary environment as well as breakdown of a failing social-economic system worldwide. The powerful interests that rule human society are most likely to implement harsh measures for social control, given their inability and unwillingness to aid the resident population in response to growing crises.

At the same time we see the emergence of new forms of cooperative community among people and the potential for new types of community.

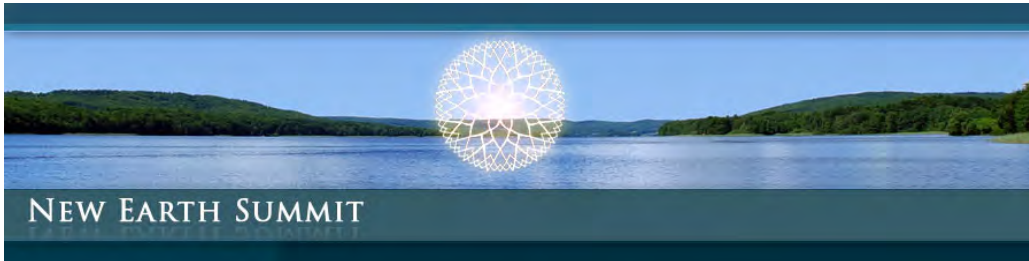
Planetary options are under consideration that will permit the most rapid transition for those who will be populating or temporarily visiting the New Earth. A New Earth will carry a population capable of living in individual self-awareness while in the context of a conscious relationship to Source and to the New Earth. Thus will continue the grand experiment of conscious transformation to a new type of transitional being.

Those who will be continuing on with “old Earth” will have much to do and much new help in re-making the planet, engaging in a caring relationship with one another and a caring relationship with the Earth, including the cleaning and correcting of all the terrible spoiling that has occurred along with the growth of the human population.

~ ~ ~

# Public Online Forum

Bringing Together Awakened Community



Home page: <http://www.newearthsummit.org>

Main forum page: <http://www.newearthsummit.org/forum/>

A forum that is free of advertisements and includes various thematic boards including:

- Special Articles to Consider
- Awakened Conscious Community
- Health and Harmony
- Predictions of Future Events
- General Discussion
- Books, videos, and music - Member reviews
- Spirituality, Transformation, and Ascension
- Dreams and Visions and Future Viewing
- World and National Events
- Changes in Planetary and Space Environments
- Sites of Special Interest – Weblinks

Contributors can submit material to posting. At present we have limited new posts and have been mainly tracking significant news and information about the changing human and planetary environment. Anyone can read what is posted. Submit material for posting by e-mail to: [newearth@newearthsummit.org](mailto:newearth@newearthsummit.org) .

~ ~ ~

## Global Awakening News

Published online at <http://www.pfcn.net/napsun-bul1.html> and available via e-mail service to opt-in subscribers.

The Global Interchange, Positive Future Consulting, Fund For Global Awakening, and Global Awakening Press are not now nor have ever been affiliated with any religious, political, or economic tendency; and most certainly are *not* aligned with *any* guru's, groups, or channeled entities.

To contact us by E-mail: [info@pfcn.net](mailto:info@pfcn.net); to contact us by postal mail:  
PO Box 969; Stevensville, MT 59870 USA